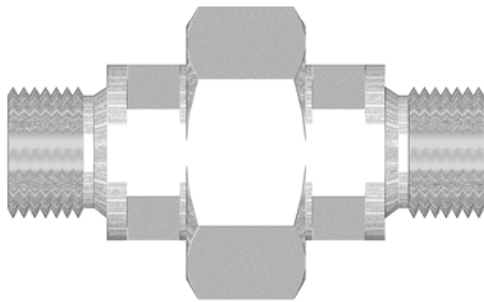
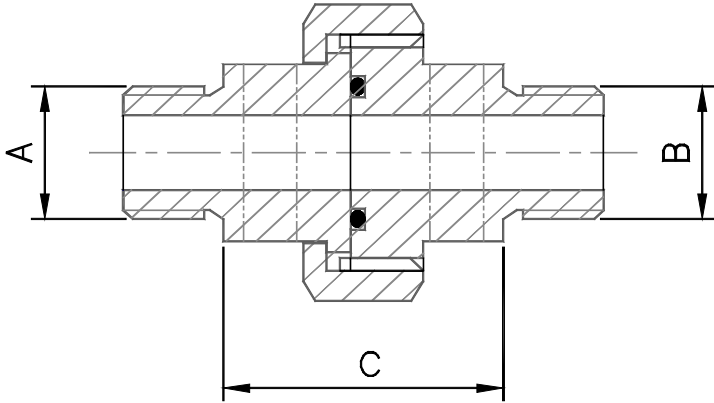


TECHNICAL DATA - (FACE SEAL UNIONS M/M BSPP-BSPP)



MODEL TYPE	DIMENSIONS		
	A	B	C
MU03-03	1/8"	1/8"	40
MU06-03	1/4"	1/8"	46
MU06-06	1/4"	1/4"	46
MU10-06	3/8"	1/4"	48
MU10-10	3/8"	1/8"	46
MU13-03	1/2"	1/8"	42
MU13-06	1/2"	1/4"	44
MU13-10	1/2"	3/8"	44
MU10-10	1/2"	1/2"	42
MU19-19	3/4"	1/2"	47
MU19-19	3/4"	3/4"	50
MU25-19	1"	3/4"	55
MU25-25	1"	1"	60
MU38-25	1.1/2"	1"	67
MU38-38	1.1/2"	1.1/2"	67
MU51-38	2"	1.1/2"	67
MU51-51	2"	2"	67
MU64-13	2.1/2"	2"	97.3
MU64-13	2.1/2"	2.1/2"	120.6
MU76-51	3"	2"	98.3
MU76-76	3"	3"	121.6
MU102-76	4"	3"	122.6
MU102-102	4"	4"	122.6
MU152-152	6"	4"	128.3
MU152-152	6"	6"	133.5

NOTES

BODY DESIGN ARE COMPLIANT TO BS1740-1
 THREADED CONNECTIONS ARE PARALLEL MALE TO BS2779
 UNIONS CAN BE SUPPLIED WITH METAL GASKET SEALS IF REQUIRED
 WORKING PRESSURES CALCULATED IN ACCORDANCE WITH ANSI B31.1 & B31.3
 OPERATING PRESSURE:- VACUUM TO 100 BARG NOMINAL (-30DEGC TO +250DEGC)
 MATERIAL:- S316 STAINLESS STEEL (AS STANDARD)
 ANY NON STANDARD CONFIGURATIONS ARE MANUFACTURED TO ORDER

H.MULLINS (EARBY) LTD

WESTERN RD, JARROW, TYNE & WEAR NE32 3DB

TEL. 0191 4891617 FAX 0191 4280375

E-MAIL:- h.mullins@mullins.co.uk